

# How To Use: Reusable Face Coverings

*Always begin with...*



1

*Remove using just the elastic loops*



5

*Put on using just the elastic loops*



2

*Always clean your hands after removal*



6

*Be sure your chin is covered*



3

*Wash daily in hot water*



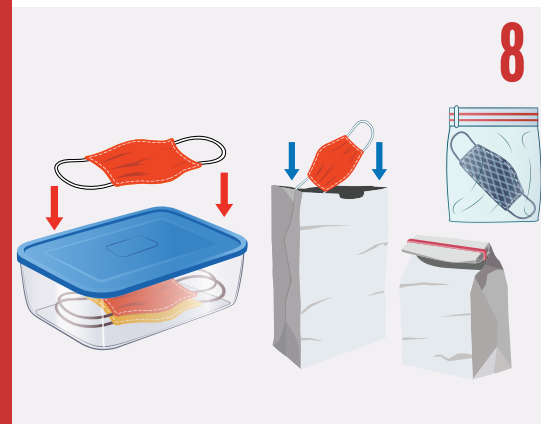
7

*Do not touch or take off in between*



4

*Store in clean and dry location*



8

*#MaskUpWisconsin*



WISCONSIN DEPARTMENT  
of HEALTH SERVICES  
P-02734A (08/2020)